



umduduzi

Hospice Care for Children

# Always Seen, Finally Heard



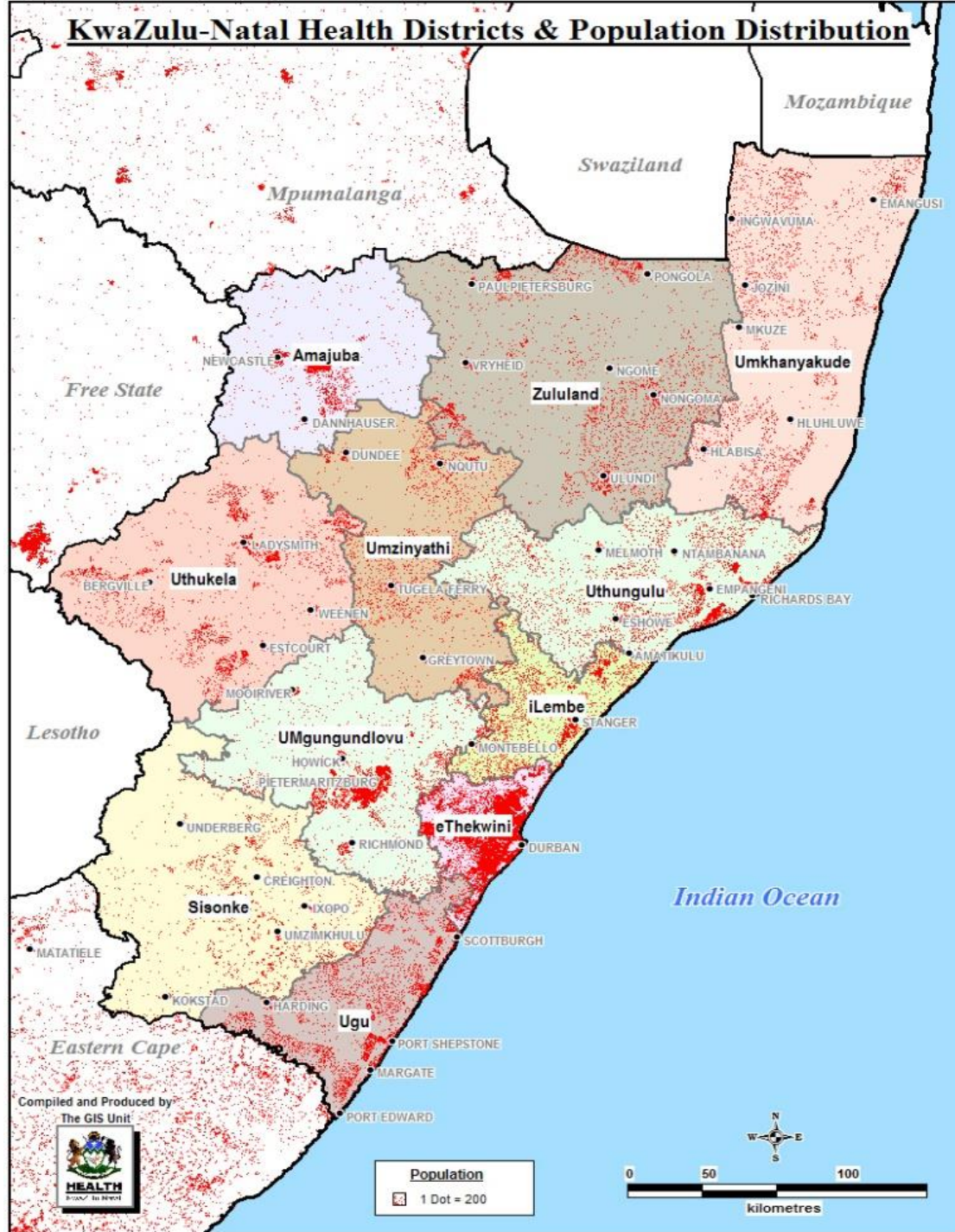
Tracey Brand

IN PARTNERSHIP WITH





# KwaZulu-Natal Health Districts & Population Distribution



Compiled and Produced by  
The GIS Unit



**Population**  
1 Dot = 200



# Background

## Estimated Population 2017

<b>RSA</b>	<b>56,52 million</b>	<b>19 million children (29.6%)</b>
KZN	11,1 million	2.2 million children (19.6%)

<b>20% of children have a chronic illness</b>	<b>440 000</b>
Of those children 5% require some form of palliative care	22 000

# How is the need being met???

Umduduzi – Hospice Care for Children is a hospital-based paediatric palliative care team based in eThekweni (Durban).

- Advice on the control of pain and other symptoms
- Teaching & training of health care professionals
- Compassionate care for children with life-threatening or life-limiting conditions
- Counselling for children and families
- Age-appropriate disclosure counselling
- Home visits and assessments
- Support through bereavement

The need is great but we're getting there slowly.....

2010

- 16 cases
- 1 hospital referring
- No teaching or training



2011

- 83 referrals
- 2 hospitals

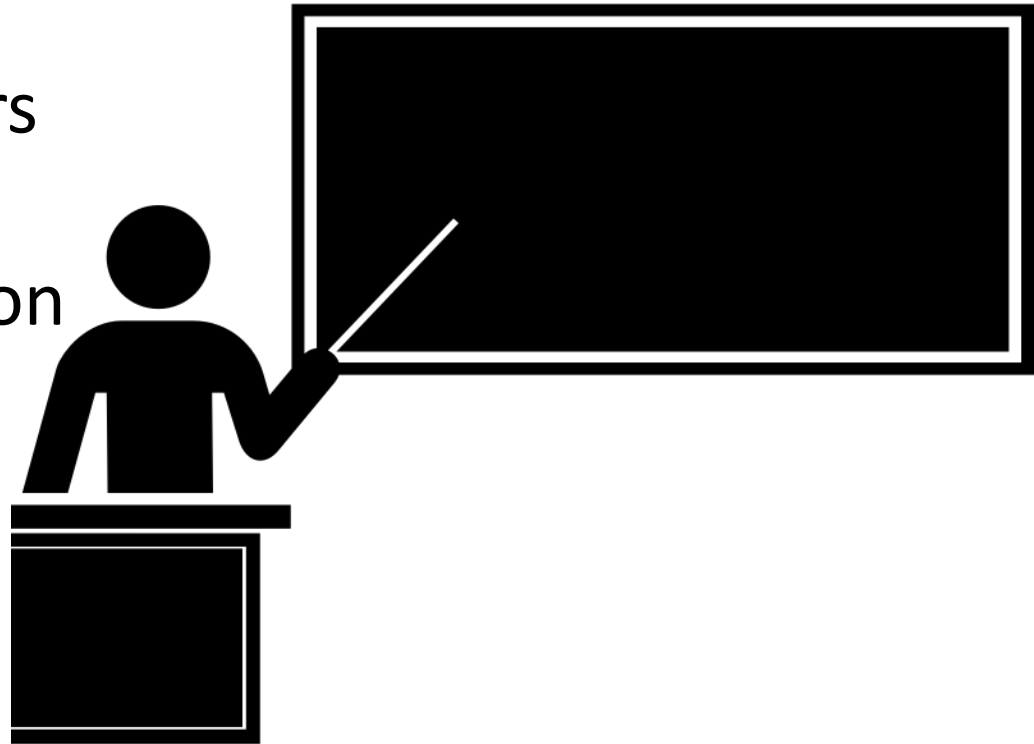
2012

- 118 referrals
- 4 hospitals
- Formal teaching & training



2017

- 225 new referrals
- 18 different hospitals
- 16 different disciplines
- CME
- Registrar training
- UKZN – 4<sup>th</sup> → 6<sup>th</sup> years
- Exam questions
- 1<sup>st</sup> year communication



# What lead to an increase?

- Team still the same
- Service still the same
- So.....



- Over the last 8 years constant presence with same message → non-threatening
- Benefit of Umduduzi's involvement tangible in patients' lives
- Rotation of registrars → different disciplines
- 2 more doctors in KZN trained in CPC → increased awareness, more case discussions



# Challenges....

- Capacity
- Timing of referrals
- Reluctance of certain disciplines



**Thank you!!!!!!**

**Tracey Brand – 0836595164**

**[tracey@umduduzi.co.za](mailto:tracey@umduduzi.co.za)**